

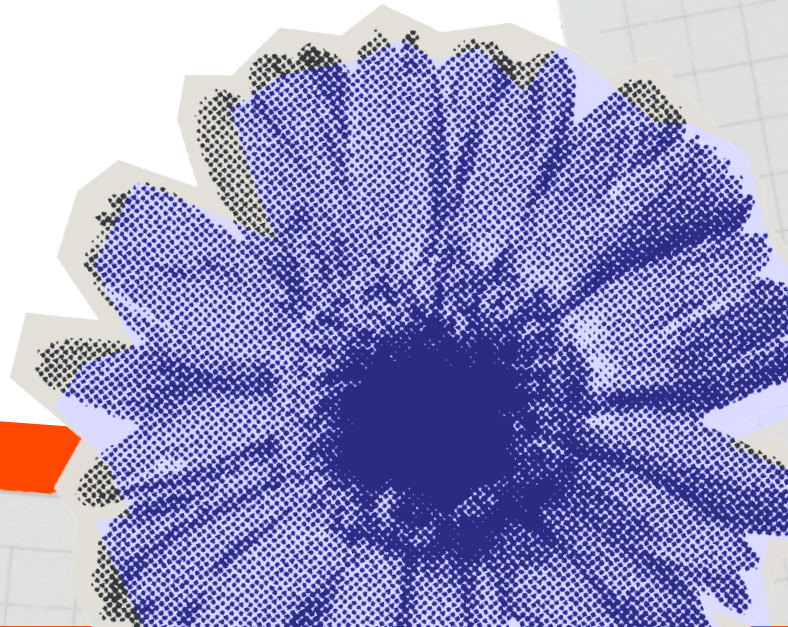


Jakobina Junias



Windhoek, Namibia

Jakobina is a passionate advocate for sustainable mobility and clean energy solutions. With a background in social work, she is now pioneering sustainable electric vehicle (EV) solutions, bringing strong skills in networking, mentorship, and community engagement to bridge the gap between technology and people. She has been nominated to serve on the sub-committee responsible for developing standards to support the implementation of Namibia's Electric Vehicle Charging Infrastructure Framework, showcasing her leadership in e-mobility and climate action. Through her work, Jakobina is committed to accelerating the adoption of electric vehicles and advancing green energy solutions across Namibia, South Africa, and the rest of Africa.





Transport systems can be considered inclusive only if...

... it is designed with the diverse needs of all people in mind, especially women, girls, youth, persons with disabilities, and marginalized communities. A truly equitable transport system must ensure safety, affordability, accessibility, and comfort for all, not just the able-bodied or financially privileged. At Amperra Charging, we believe inclusive mobility means designing EV infrastructure that is usable, safe, and beneficial for everyone, regardless of gender, age, or ability.

If I was in power of our transport systems, the first thing I would do is...

... prioritize the integration of accessible, clean, and safe public transport linked to electric vehicle infrastructure. I would work to ensure all urban and rural communities have access to e-mobility solutions that are sustainable and affordable. I'd also mandate gender-sensitive design principles, ensure better lighting and surveillance at transport hubs, and expand EV infrastructure to underserved areas to close the mobility gap.

How does the current situation for women, young people and persons with disabilities in your city influence your work?

Living in Windhoek and working across Namibia, I've seen firsthand how women, youth, and people with disabilities often struggle to access safe and reliable transport. This reality drives me to ensure Amperra's EV charging network is part of a larger solution—by making sure our locations are accessible, integrated with inclusive planning, and located in areas where communities need them most. I also advocate for these groups to be involved in conversations around mobility and design, not just as users but as contributors.

What's the main challenge that you face in your daily work?

One of the biggest challenges I face is navigating a sector that's still very male-dominated and underdeveloped in Africa. Securing funding for early-stage clean mobility solutions, especially those led by women, is difficult. In addition, building awareness around e-mobility and electric vehicle charging infrastructure in communities unfamiliar with

the technology takes time and consistent engagement. But despite these challenges, I remain committed to shaping a more inclusive, sustainable transport future for Namibia and beyond.

Why is it important to listen to young people?

Listening to young people is important because we bring bold ideas, urgency, and a deep understanding of the future we want to build, especially in transport, where innovation and sustainability go hand in hand.

What would you tell other young people working in the transport field?

To other young people working in transport: don't wait for permission. Start where you are, collaborate, and focus on solving real challenges. You are the future of mobility, and your ideas matter.



My work aligns with the Hamburg Charter Principles!

Principle #4 Climate-Friendly Mobility Industries

Principle #7 promoting of Electric Mobility

My work aligns strongly with the Hamburg Charter Principle of Climate Action, because at Amperra, we are accelerating the transition to clean transport, reducing emissions, and creating inclusive infrastructure that works for both people and the planet.

